
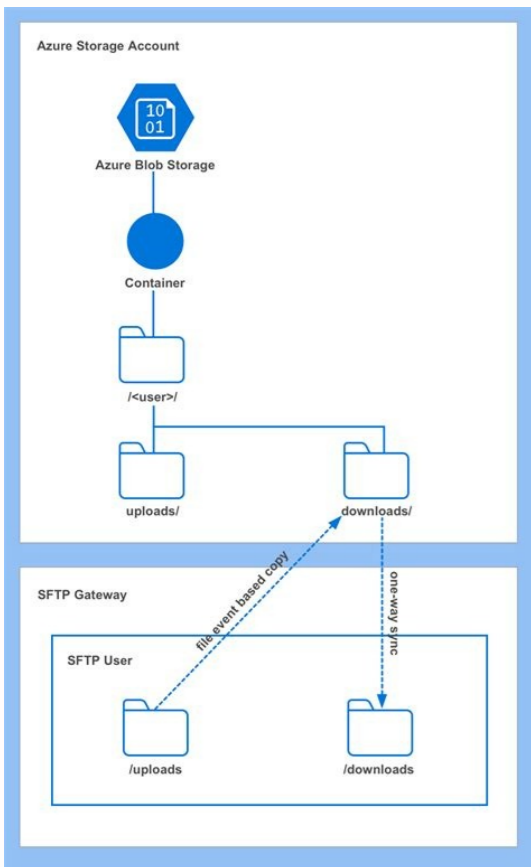
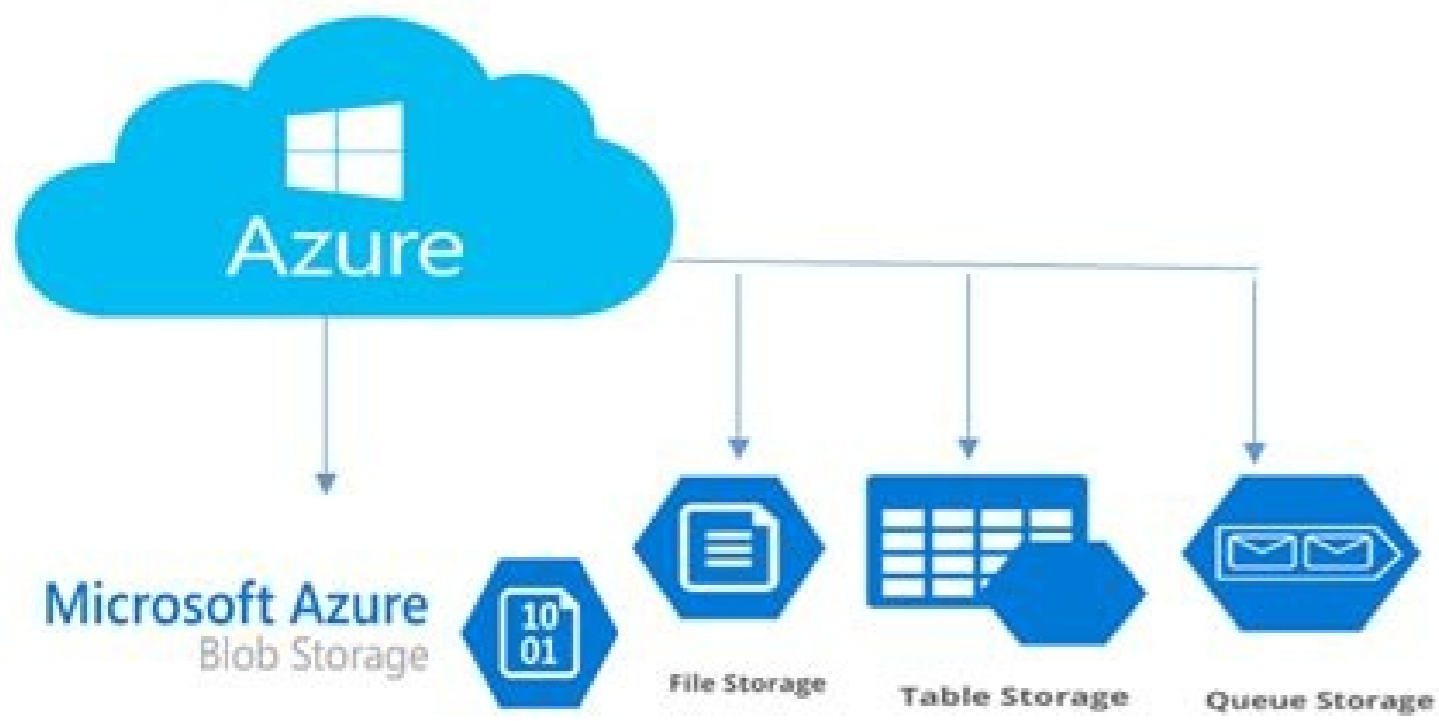
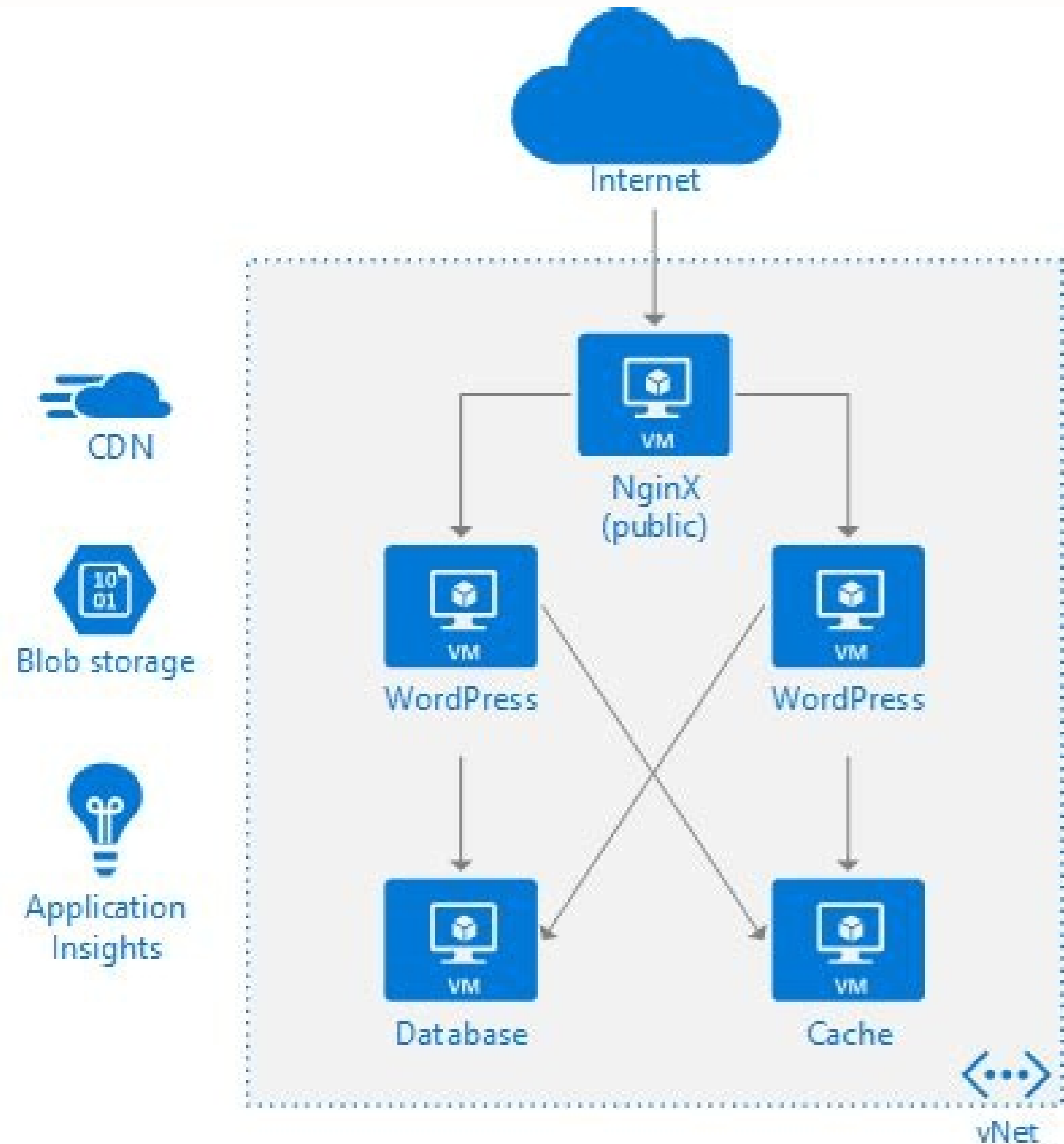
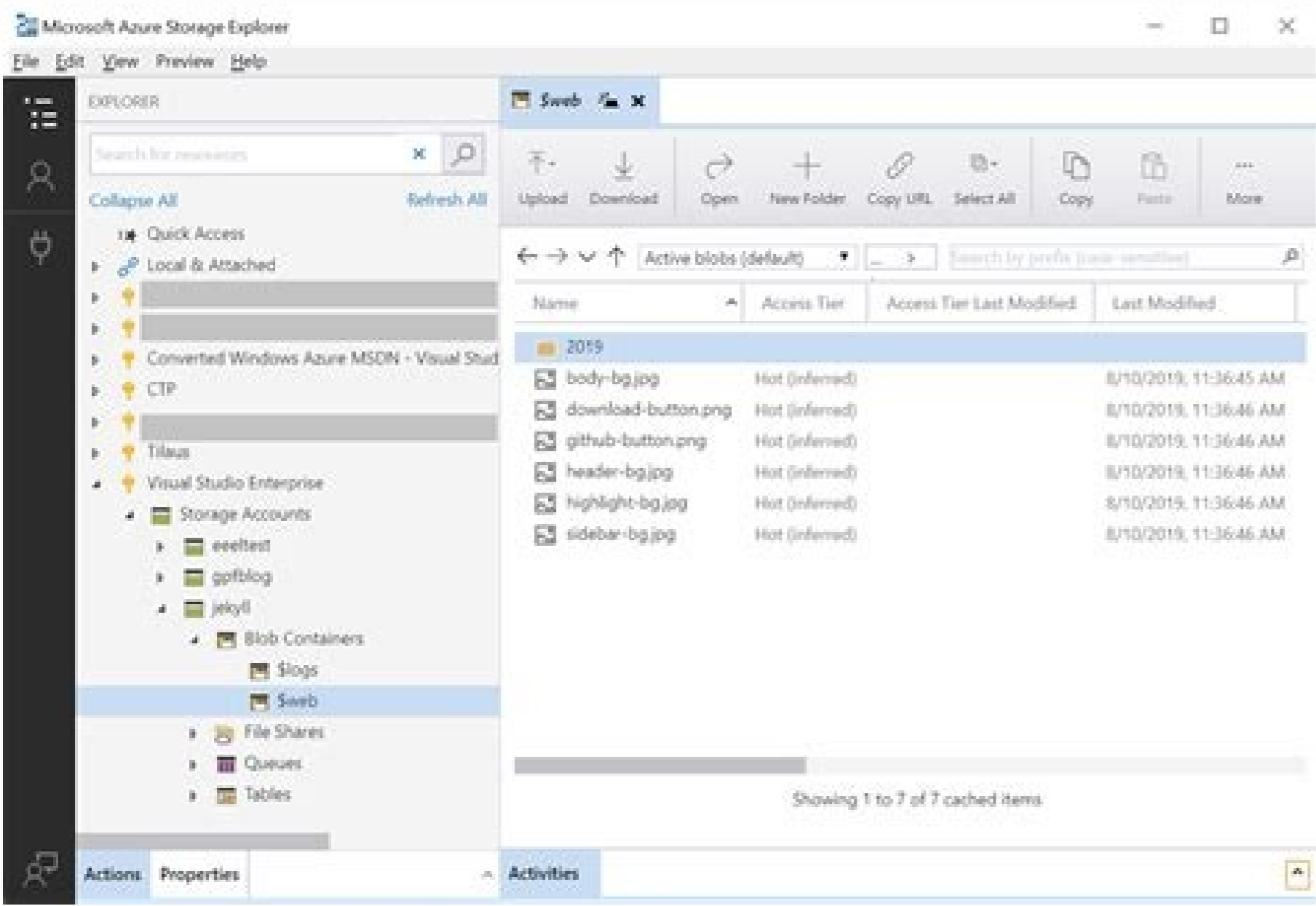


Azure blob storage folder

I'm not robot  reCAPTCHA

Next

Azure blob storage folder



Azure blob storage folder statistics. Azure blob storage folder permissions. Azure blob storage folder access. Azure blob storage folder security. Azure blob storage folder. Azure blob storage folder size. Azure blob storage folder in container. Azure blob storage folder limits.

BlobFuse © an open code project designed to provide a virtual file system supported by Azure Blob storage. It uses the libfuse open code library to communicate with the Linux FUSE kernel module, and implements file system operations using the Azure Storage Blob REST APIs. Blobfuse is ©, and is supported © microsoft as long as it is used within its limits documented herein. Blobfuse supports both reading and writing, however, ensures the synchrony of the data written for storage using other APIs or other blobfuse assemblies. For data integrity, it is recommended that multiple sources do not modify the same blob. Please submit here a copy for any questions/requests/requests. Features Assemble a Blob storage container in Linux Basic file system operations, such as mkdir, opendir, read, rmdir, open, read, create, write, close, unlock, truncate, stat, rename Local Cache to improve subsequent access times Parallel download and load features for quick access to large blobs Allows us to mount the same container for reading-only rooms. Autenticates using storage key credentials, SaS key, Managed Identity and SPN Allows the installation of Features ADLS Gen2 You can install blobfuse from the Linux Software Portfolio for Microsoft products. The process © explained on the blobfuse installation page. Alternatively, you can clone this repo, install the dependencies (fuse, libcurl, gcrypt and GnuTLS) and build from the source code. See details on the wiki. Use assembly Once blobfuse is installed, configure your account credentials in the template provided in the blobfuse (connection.cfg) folder, or in the environment variables. For brevity, we will use the following environment variables for authentication using the name of and key: export AZURE_STORAGE_ACCOUNT=myaccountname export AZURE_STORAGE_ACCESS_KEY=myaccountkey is recommended to use a high performance disk, or ramdisk for the local cache. In VMs Azure, this is © the effluent disk © is that mounted on /mnt on Ubuntu and/mnt/feature in RHEL. Please make sure that your user has access to this location. If not, create and full to your user: mkdir -p/mnt/blobfuse/tmp chown /mnt/blobfuse/tmp Create your mountpoint point (mkdir/path/to/mount) and mount a blob container (already must exist) with BLOFUSE: BLOFUSE / Path / to / Mount --container-NAME = MyContainer --tmp-path = /mnt/blobfuse/tmp Note Use absolute paths for direct paths in command. Relative and shortcut paths (~/) do not work. For more information, see the options of Mount Wiki All options for the content of the fuse sums are described on the table of the fuse See Mount.sh provided in this product for a sample of the most ©-used options. In addition to the options of the fuse hand: BLOFUSE offers the following options: --tmp-path = / path / to / cache: Configures the location of the TMP for the cache. Always configure the faster disk (SSD or Ramdisk) for better performance. [Optional] --Empty-Dir-Check = TRUE: Available Reassembly using a non-empty TMP path, the pattern is © false. This option is only available after 1.3.1. [Optional] --config-file = / path / to / connection.cfg: Sets the path to the file where account credentials are provided [optional] --container-name = contAiner: Mandatory if no configuration file is specified. Also configure © the account name and the /SAS key through the various Azure Storage Account and Azure Storage Access Key/Azure Storage Sas Token [optional] --use-https = TRUE | False: Allows HTTPS communication with BLOB storage. True by default. HTTPS should be if you are communicating to the storage content through © oauth. [Optional] --File-cache-timeout-in-seconds = 120: blobs will be cached in the Temp folder so many seconds. 120 seconds per standard. During this time, BLOFUSE will not check whether the file is or not. [optional] --log-level= log note note: allows records recorded in syslog. Define for log-. Warning by default. Allowed values are [Optional] --use-Attr-cache = True Baa124; FALSE: Enables attributes of a bubble being stored. False by omission. (Only available in BlobFuse 1.1.0 or above) [Optional] --use-ADLS = True Bae124; False: Enable Blobfuse to access the Azure Datalake storage account. This option is only available after versions 1.3. 1 [Optional] --No-Symlinks = true: Turn off Simlinks. Shutdown Simlinks will improve performance. Symbols are bound by pattern. This option is only available after versions 1.3. 1. [OPTIONAL] - Maximum controncurrence = 20) Option to replace the standard number of storage, pattern = 12, please note that BloFuse Caps this in 40. So, if the user specifies a value between 0 to 40, the value of the users will overlap the pattern. However, if the user specifies a value > 40 blobfuse still only allow 40

competitors connections. [OPTIONAL] --Cache-size-MB = 1000: Option to set the cache size in MB. By pattern, it is 80% of the available memory. Use this option to download the cache size or increase it. This option is only available after versions 1.3. 1. [Optional] --atral JosuÃ© = 20: attribute time in seconds. Performance improvement option. It is a default fuse option to save the attributes of a file. For more details, see the Fuse man page. The attributes of the files accessed recently will be saved for the specified seconds. Entry: JOSUÃ© = 20: The input time in seconds. Performance improvement option. It is a default fuse option to save the file list on a read call. For more details, see the Fuse man page. The attributes of the files accessed recently will be saved for the specified seconds. [OPTIONAL] The configuration of this value for a number exceeding ten 1 will cancel this standard list call. For containers with a large number of files that set this up for ten seconds can save \$\$\$\$\$\$\$\$\$\$. Please be careful not to set it bigger than 60 60 Because no list is going to work this time. [OPTIONAL] --High-disk-threshold=90: High disk threshold percentage. When disk usage reaches this cache dump limit resumes. This pair replaces the parÃ©cache-file-timeout-in-seconds' and the cached files will be removed even if it is not expired. Files that are currently in use (open) will not be dumped from the cache. Low percentage of disk threshold. Stop dumping cache, which was triggered by 'high-disk-threshold' when disk usage returns to the level specified by low-disk-threshold [OPTIONAL] --upload-modified-only=false: Flag to turn off the required loads for storage. The pattern is © so that any file opened in write mode is uploaded to storage. If you intend to send only files that have your content modified only --upload modified=true. Please note that if you set this up as true metadata changes, you will only be ignored and not pushed into storage. Setting this to true will prevent excessive billing of PUTs and improve perf. This option is available from issue 1.3. 7 [OPTIONAL] --cache-poll-timeout-msec=1: Time in milliseconds in order to search for possible expired files waiting for the cache dump. The standard is © millisecond. Longer values can help performance. Number of files to be cached at once. By default it means no limit. All expired files will be dumped. This value can be adjusted to a number greater than zero to locate cache dump in different cycles so that 100% CPU is not consumed © per cache dump. [OPTIONAL] --set-content-type=false: Flag to turn on automatic content-type property based on the file extension. The pattern is ©, so the content type will only be configured if the uploaded file specifies it. [OPTIONAL] p: If the external network is only available through © s of a proxy server, this meter must specify the pem proxy certificate otherwise the blobfuse cannot for the storage account. This option is available only from version 1.3. 7 [OPTATIVE] --https-proxy=: If the external network is only available through © s from a proxy server, this parameter must specify the proxy server together with the port that is © 8080, unless there are some deviations from the normal number of door assignments. This option is available only from version 1.3. 7 [OPTATIVE] --http-proxy=: Only used when https © shut down using --use-https=false, and if the external network is only available through © s from a proxy server, this parameter must specify the proxy server together with the port that is © 8080, unless there are some deviations from the normal number of door assignments. This option is available only from version 1.3. 7 [OPTATIVE] --max-retry=26: Maximum re-entry count if failure rates are likely to re-enter. The default count © of 26. This option is available only from version 1.3. 8 [OPTATIVE] -m x range. trusting in seconds=60: Number of seconds between two attempts, range of attempts © increased exponentially but can never exceed this value. The default Nax nimum interval © 60 seconds. This option is available only from version 1.3. 8 [OPTATIVE] -basic-remount-check=false: Set this option to true if you want to check a state already assembled using /etc/mtab instead of calling syscall'setmntent'. The default © Fake. It is known that for AKS 1.19 and some other Linux distros, the blobfuse will throw a segmentation error in the holder, so set this to true. This option is available only from version 1.3. 8 [OPTATIVE] --pre-mount-validate=false: Set this to be true to skip version check cURL and only directly validate the storage link before mounting. The defect is © fake, so use it only if you know you have Version curl, if contrary the blobfuse will be hanging. This option is only available from version 1.3.8 [OPTATIVE] --background-download = false: Set this option as true if you want the file to be discharged in the background in open. Make this reality reality place a wait on the "read"/"write" calls © download is complete. If the file is already in the local cache, this exchange is not © evaluated. The default value is © false. This option is only available from version 1.4.0 [OPTATIVE] --invalidate-on-sync=false : Set this option to true if you want the content of the file or direct or the attribute cache to be invalidated when the linux sync command is issued in a file or direct. 'sync' in a file will remove the file from the cache and invalidate its attribute cache, while 'sync' in a direct text will invalidate the attribute cache for all files and directs under it recursively. The default is © false. This option is only available from version 1.4.0 [OPTIONAL] --streaming=false : Allow files to be read instead of the disk cache. This option works only with read-only assembly. This option is only available from version 1.4.0 [OPTATIVE] --stream-cache-mb=500 : Limit the total amount of data cached in the memory to save the blobfuse memory footprint. [OPTIONAL] --max-blocks-per-file=3 : Maximum number of blocks to be cached in the memory for a read stream. [OPTIONAL] --block-size-mb=16 : Size (in MB) of a block to be unloaded during streaming. If the configured block size is

Wikipédia:Esplanada/geral

Wikipédia:Esplanada/geral

Wikipédia:Esplanada/geral

Wikipédia:Esplanada/geral

Wikipédia:Esplanada/geral

Wikipédia:Esplanada/geral

Wikipédia:Esplanada/geral

Wikipédia:Esplanada/geral

Wikipédia:Esplanada/geral

Wikipédia:Esplanada/geral

Wikipédia:Esplanada/geral

Wikipédia:Esplanada/geral

Wikipédia:Esplanada/geral

Wikipédia:Esplanada/geral

Wikipédia:Esplanada/geral

Wikipédia:Esplanada/geral

Wikipédia:Esplanada/geral

Wikipédia:Esplanada/geral

Wikipédia:Esplanada/geral

Wikipédia:Esplanada/geral

Wikipédia:Esplanada/geral

Wikipédia:Esplanada/geral

Wikipédia:Esplanada/geral

Wikipédia:Esplanada/geral

Wikipédia:Esplanada/geral

Wikipédia:Esplanada/geral

Wikipédia:Esplanada/geral

Wikipédia:Esplanada/geral

Wikipédia:Esplanada/geral

Wikipédia:Esplanada/geral

Wikipédia:Esplanada/geral

Wikipédia:Esplanada/geral

Wikipédia:Esplanada/geral

Wikipédia:Esplanada/geral

Wikipédia:Esplanada/geral

Wikipédia:Esplanada/geral

Wikipédia:Esplanada/geral

Wikipédia:Esplanada/geral

Wikipédia:Esplanada/geral

Wikipédia:Esplanada/geral

Wikipédia:Esplanada/geral

Wikipédia:Esplanada/geral

Wikipédia:Esplanada/geral

Wikipédia:Esplanada/geral

Wikipédia:Esplanada/geral

Wikipédia:Esplanada/geral

Wikipédia:Esplanada/geral

Wikipédia:Esplanada/geral

Wikipédia:Esplanada/geral

Wikipédia:Esplanada/geral

Wikipédia:Esplanada/geral

Wikipédia:Esplanada/geral

Wikipédia:Esplanada/geral

Wikipédia:Esplanada/geral

Wikipédia:Esplanada/geral

Wikipédia:Esplanada/geral

Wikipédia:Esplanada/geral

Wikipédia:Esplanada/geral

Wikipédia:Esplanada/geral

Wikipédia:Esplanada/geral

Wikipédia:Esplanada/geral

Wikipédia:Esplanada/geral

Wikipédia:Esplanada/geral

Wikipédia:Esplanada/geral

Wikipédia:Esplanada/geral

Wikipédia:Esplanada/geral

Wikipédia:Esplanada/geral

Wikipédia:Esplanada/geral

Wikipédia:Esplanada/geral

Wikipédia:Esplanada/geral

Wikipédia:Esplanada/geral

Wikipédia:Esplanada/geral

Wikipédia:Esplanada/geral

Wikipédia:Esplanada/geral

Wikipédia:Esplanada/geral

Wikipédia:Esplanada/geral

Wikipédia:Esplanada/geral

Wikipédia:Esplanada/geral

Wikipédia:Esplanada/geral

Wikipédia:Esplanada/geral

Wikipédia:Esplanada/geral

Wikipédia:Esplanada/geral

Wikipédia:Esplanada/geral

Wikipédia:Esplanada/geral

Wikipédia:Esplanada/geral

Wikipédia:Esplanada/geral

Wikipédia:Esplanada/geral

Wikipédia:Esplanada/geral

Wikipédia:Esplanada/geral

Wikipédia:Esplanada/geral

Wikipédia:Esplanada/geral

Wikipédia:Esplanada/geral

Wikipédia:Esplanada/geral

Wikipédia:Esplanada/geral

Wikipédia:Esplanada/geral

Wikipédia:Esplanada/geral

Wikipédia:Esplanada/geral

Wikipédia:Esplanada/geral

Wikipédia:Esplanada/geral

Wikipédia:Esplanada/geral

Wikipédia:Esplanada/geral

Wikipédia:Esplanada/geral

Wikipédia:Esplanada/geral

Wikipédia:Esplanada/geral

Wikipédia:Esplanada/geral

Wikipédia:Esplanada/geral

Wikipédia:Esplanada/geral

Wikipédia:Esplanada/geral

Wikipédia:Esplanada/geral

Wikipédia:Esplanada/geral

Wikipédia:Esplanada/geral

Wikipédia:Esplanada/geral

Wikipédia:Esplanada/geral

Wikipédia:Esplanada/geral

Wikipédia:Esplanada/geral

Wikipédia:Esplanada/geral

Wikipédia:Esplanada/geral

Wikipédia:Esplanada/geral

Wikipédia:Esplanada/geral

Wikipédia:Esplanada/geral

Wikipédia:Esplanada/geral

Wikipédia:Esplanada/geral

Wikipédia:Esplanada/geral

Wikipédia:Esplanada/geral

Wikipédia:Esplanada/geral

Wikipédia:Esplanada/geral

Wikipédia:Esplanada/geral

Wikipédia:Esplanada/geral

Wikipédia:Esplanada/geral

Wikipédia:Esplanada/geral

Wikipédia:Esplanada/geral